

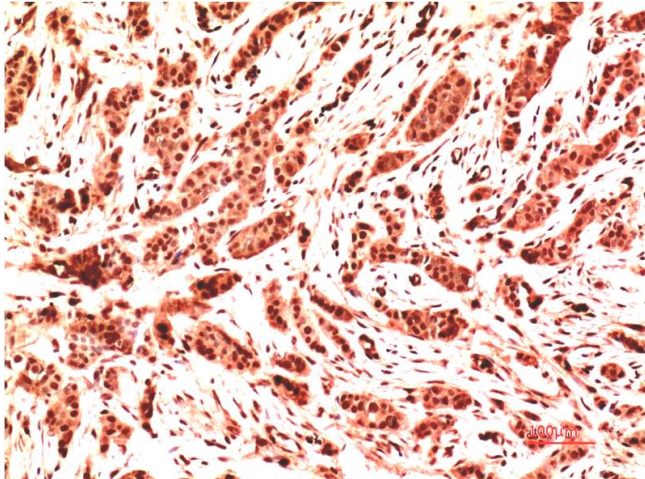


Ubiquitin Mouse mAb(2G3)

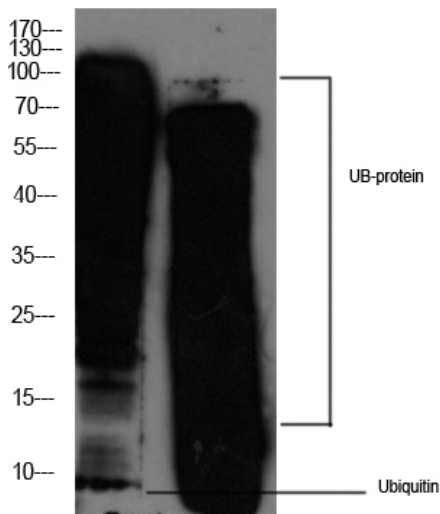
Catalog No	YP-Ab-04775
Isotype	IgG
Reactivity	All
Applications	IHC;WB
Gene Name	Ubiquitin
Protein Name	Ubiquitin
Immunogen	Synthesized peptide derived from Ubiquitin
Specificity	This antibody detects endogenous levels of Ubiquitin
Formulation	Liquid in PBS containing 50% glycerol, 0.5% BSA and 0.05% sodium azide.
Source	Monoclonal, Mouse
Purification	The antibody was affinity-purified from mouse ascites by affinity-chromatography using specific immunogen.
Dilution	IHC-p1:50-200 ,WB 1:1000-2000
Concentration	1 mg/ml
Purity	≥90%
Storage Stability	-20°C/1 year
Synonyms	
Observed Band	
Cell Pathway	
Tissue Specificity	
Function	
Background	Ubiquitin is a conserved polypeptide unit that plays an important role in the ubiquitin-proteasome pathway. Ubiquitin can be covalently linked to many cellular proteins by the ubiquitination process, which targets proteins for degradation by the 26S proteasome
matters needing attention	Avoid repeated freezing and thawing!
Usage suggestions	This product can be used in immunological reaction related experiments. For more information, please consult technical personnel.



Products Images



Immunohistochemical analysis of paraffin-embedded Human Breast Carcinoma Tissue using Ubiquitin Mouse Monoclonal antibody diluted at 1:500



Western blot analysis of 1) Hela Cell Lysate, 2) A431 Cell Lysate using Mouse mAb diluted at 1:2,000.